

System Requirements

- Ethernet-based Cable or DSL Modem
- Computers with Windows, Macintosh, or Linux-based operating systems with an installed Ethernet adapter
- Internet Explorer Version 6.0 or Netscape Navigator 7.0 and above

Package Contents



**DI-LB604
Load Balancing Router**



**CD-ROM
with
Manual & Installation Guide**



CAT5 Ethernet Cable



5V AC Power Adapter

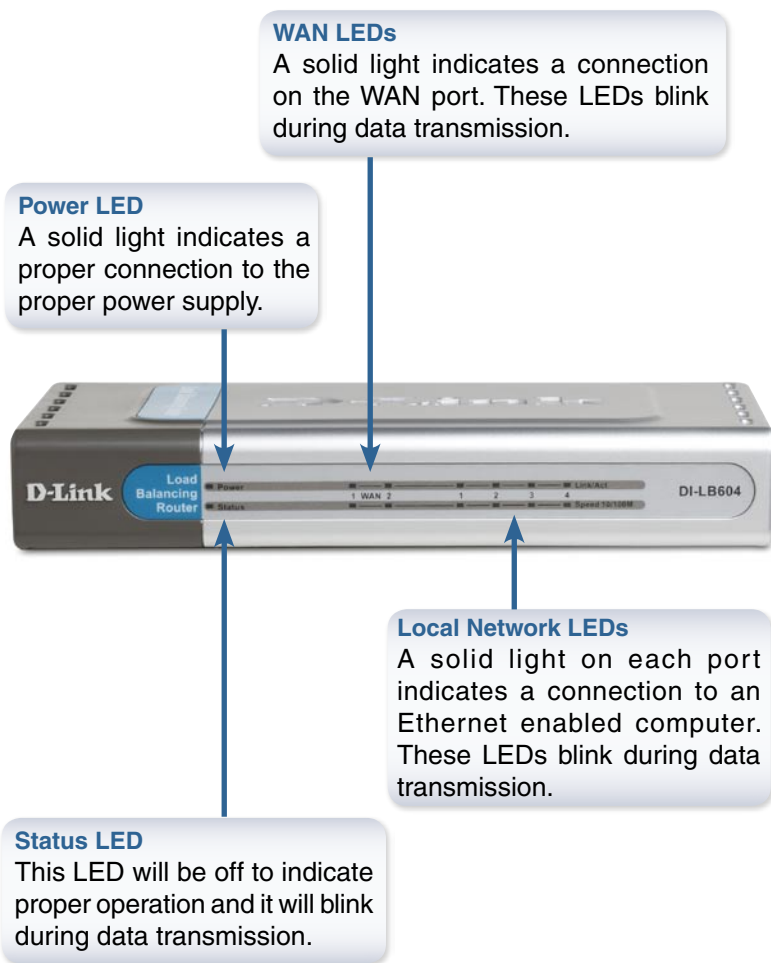


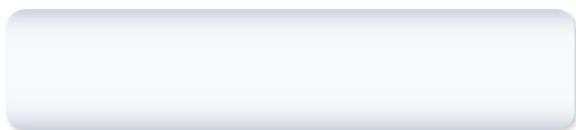
Using a power supply with a different voltage rating will damage this product and void the warranty.

If any of the above items are missing, please contact your reseller.

Hardware Overview

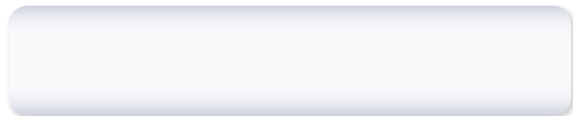
Front Panel





WAN Ports

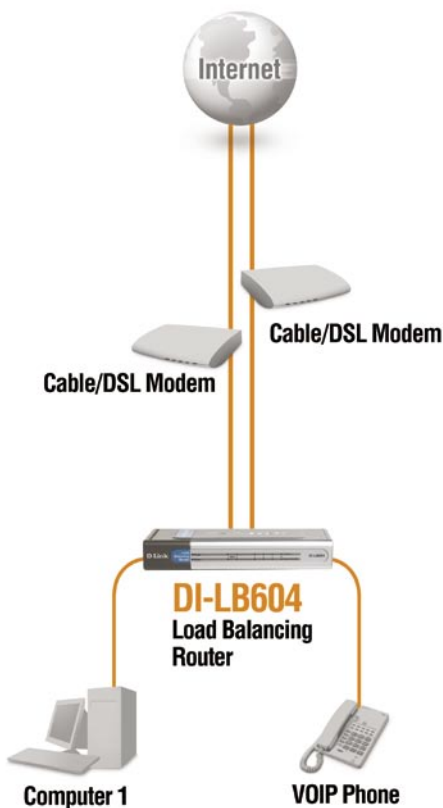
This is for the connection of an Ethernet cable to your Cable or DSL modem.



Connecting The DI-LB604 Load Balancing Router To Your Network

- A.** First, connect the power adapter to the receptor at the back panel of the DI-LB604 and then plug the other end of the power adapter to a wall outlet or power strip. The Power LED will turn ON to indicate proper operation.
- B.** 1. Power off your Cable or DSL modem; some devices may not have an on/off switch and will require you to unplug the power adapter. Now, the DI-LB604 should be powered on and the Cable/DSL modem should be turned off.
2. Cable/DSL modem (**Power Off**) – DI-LB604 (**Power On**)
Connect an Ethernet cable to the Ethernet jack located on the Cable/DSL modem. After the Ethernet cable is securely connected, power on the Cable/DSL modem by turning on the unit or plugging in the power adapter.
3. Cable/DSL modem (**Power On**) – DI-LB604 (**Power On**)
Insert the other end of the Ethernet cable to the WAN PORT on the back panel of the DI-LB604. The WAN LED light will illuminate to indicate proper connection. If the WAN LED is not illuminated, please go back to step B1 and repeat the instructions.
- C.** Insert an Ethernet cable to LAN port 1 on the back panel of the DI-LB604 and an available Ethernet port on the network adapter in the computer you will use to configure the DI-LB604. The LED light for LAN Port 1 will illuminate to indicate proper connection. (Note: The LAN Ports on the DI-LB604 are Auto-MDI/MDIX. Meaning you can use a straight-through or crossover Ethernet cable to the LAN Ports.)

Getting Started



Using The Setup Wizard

Open your Web browser and type "**http://192.168.0.1**" into the URL address box. Then press the **Enter** or **Return** key.



The logon screen will appear.

Type "**admin**" for the username and leave the password field blank.



Click **OK**

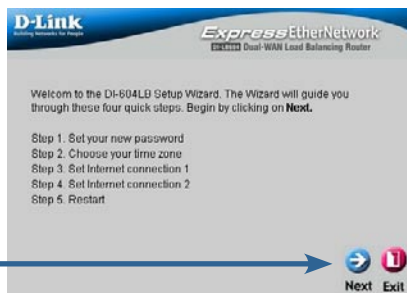
Once you have logged in, the **Home** screen will appear.



Click **Run Wizard**

You will see the following screens:

Click **Next**



Set up your new password.

You have the option to establish a password for the username "admin".

Click **Next**



Choose your time zone

from the drop down list.

Click **Next**



! If you are unsure of which setting to select, please contact your Internet Service Provider.

Select the type of Internet Connection that is attached to WAN1.

Click **Next**

D-Link
Enabling Networks for People

ExpressEtherNetwork
Dual-WAN Load Balancing Router

WAN1 Internet connection

Select the connection type to connect to your ISP. Click **Next** to continue.

WAN1 Connect Mode:

WAN1 Connect Type:

Back Next Exit

Enter the needed information for the type of connection you have chosen.

Click **Next**

D-Link
Enabling Networks for People

ExpressEtherNetwork
Dual-WAN Load Balancing Router

Set WAN1 Static IP Address

Enter in the static IP information provided to you by your ISP. Click **Next** to continue.

IP Address:

Subnet Mask:

Gateway:

DNS Address: 1. 2. (optional)

Back Next Exit

Select the type of Internet connection that is attached to WAN2.

Click **Next**

D-Link
Enabling Networks for People

ExpressEtherNetwork
Dual-WAN Load Balancing Router

WAN2 Internet connection

Select the connection type to connect to your ISP. Click **Next** to continue.

WAN2 Connect Mode:

WAN2 Connect Type:

Back Next Exit

Enter the needed information for the type of connection you have chosen.

The screenshot shows the 'Set WAN2 Dynamic IP Address' screen of the D-Link Express Ethernet Network Setup Wizard. The title bar includes the D-Link logo and 'Express Ethernet Network'. The main heading is 'Set WAN2 Dynamic IP Address'. Below it, a note states: 'If your ISP require you to enter a specific host name, Domain Name or specific MAC address, please enter it in. Click **Next** to continue.' There are three input fields: 'Host Name' with the value 'DBG00120B' (optional), 'Domain Name' (optional), and 'MAC Address' with the value '00-09-A3-00-12-00' (optional). At the bottom right, there are three buttons: 'Back' (left arrow), 'Next' (right arrow), and 'Exit' (red square with 'X'). A blue arrow points from the 'Next' button to the 'Click Next' callout.

Click **Next**

Your Setup is Complete!

The screenshot shows the 'Setup Completed' screen of the D-Link Express Ethernet Network Setup Wizard. The title bar includes the D-Link logo and 'Express Ethernet Network'. The main heading is 'Setup Completed'. Below it, a note states: 'The Setup Wizard has completed. Click on **Back** to modify changes or mistakes. Click **Restart** to save the current settings and reboot the DI-LB604.' At the bottom right, there are three buttons: 'Back' (left arrow), 'Restart' (circular arrow), and 'Exit' (red square with 'X'). A blue arrow points from the 'Restart' button to the 'Click Next' callout.

Click **Next**

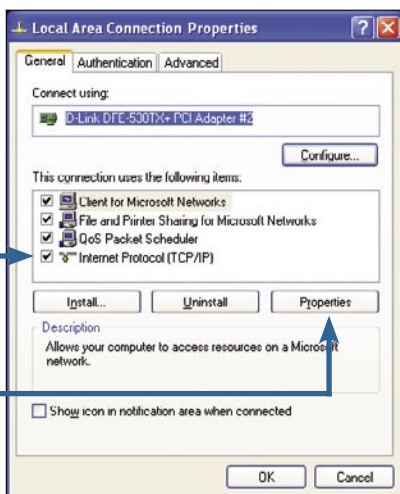
To connect to the network, make sure the network adapter in your computer is configured properly. Here's how to configure the network adapter to obtain an IP address automatically for the DI-LB604 Load Balancing Router.

For **Microsoft Windows XP**: Go to **Start > right click on My Network Places > select Properties > Right click on the Network Connection associated with the Ethernet adapter and select Properties** (i.e., D-Link DFE-530TX+).



Click Internet Protocol (TCP/IP)

Click Properties



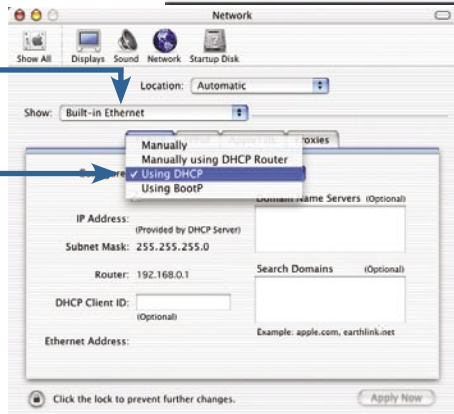
Select Obtain an IP address automatically



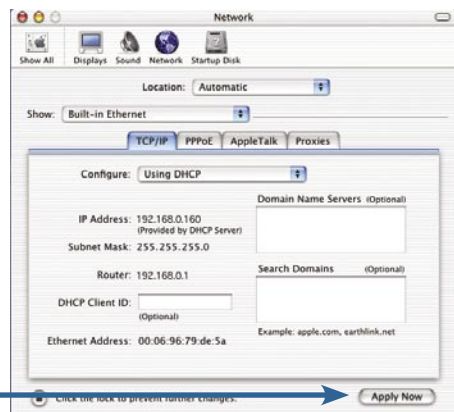
Click OK

For **Apple Macintosh OS X:**

Go to



Select **Using DHCP**
in the Configure pull
down menu



Click on **Apply Now**

Restart your computer (if necessary)

NOTES

NOTES

NOTES

Technical Support

D-Link's website contains the latest user documentation and software updates for D-Link products.

D-Link provides free technical support for customers within the United States and Canada for the duration of the product's warranty period.

U.S. and Canadian customers can contact D-Link Technical Support through our website or by phone.

United States

Telephone

(877) 453-5465

Twenty four hours a day, seven days a week.

World Wide Web

<http://support.dlink.com>

E-mail

support@dlink.com

Canada

Telephone

(800) 361-5265

Monday through Friday, 7:30am to 9:00pm EST.

World Wide Web

<http://support.dlink.ca>

E-mail

support@dlink.ca



©2005 D-Link Corporation/D-Link Systems, Inc. All rights reserved. D-Link and the D-Link logo are registered trademarks of D-Link Corporation or its subsidiaries in the United States and other countries. Other trademarks are the property of their respective owners. All references to speed are for comparison purposes only. Product specifications, size, and shape are subject to change without notice, and actual product appearance may differ from that depicted herein. Visit www.dlink.com for more details.

DI-LB604 10102005